

Shark-SU60 Multi-functional Deck Unit



www.lcsonar.com



Multi-functional integration

High accuracy positioning

Dual power supply

Waterproof IP66 grade

The Shark-SU 60 multi-function integrated sonar unit is the deck part of the side scan sonar system. The unit adopts an integrated waterproof design. With integrated power management system, industrial control machine system and positioning system etc, just connect the power supply and towing fish, you can complete the assembly of the whole system, to realize the terrain and landform imaging display and target positioning functions. The sonar unit is composed of industrial control machine module, positioning module, power supply module, communication module, display group and so on.

The power module can realize dual power supply at the same time, support 220VAC / 110VAC power supply or 12V battery power supply, automatically identify the positive and negative polarity of the battery input, positive and negative connection can supply normally, and indicate the battery power state in real time through the indicator light. The towing fish power supply module can select the output voltage according to different models.

The industrial control machine module uses the built-in keyboard for interaction, reserved USB3.0 interface, RJ 45 interface and RS232 public port for users to expand the use, and the built-in autonomous OTech sonar acquisition software.

The positioning module is composed of high-precision positioning orientation board and antenna. The SMA interface positioning antenna is built in, which is suitable for the unshielding platform (such as charge boat). At the same time, the external TNC interface positioning and orientation antenna can be selected to realize the positioning and orientation function in more application scenarios.

The display module adopts a 17.3-inch screen with high brightness of 1000 lumens. It is also equipped with ambient light sensor, which can adjust the screen brightness adaptively according to different external lighting environment, and can be clearly displayed in the hot sun.

Advantage and characteristics

- Integrated waterproof, anti-salt fog design, IP66 protection grade
- Built-in low power consumption and high performance industrial control machine, no fan, long life design
- Strong scalability, reserved USB 3.0 interface, RJ 45 interface and RS232 interface
- Support AC, DC dual power supply, battery forward and reverse connection can work normally
- Built-in high-precision positioning orientation instrument, internal integrated antenna
- 17.3-inch sunshine display screen, integrated waterproof industrial control keyboard
- OTech Independent multi-function software can be upgraded for free



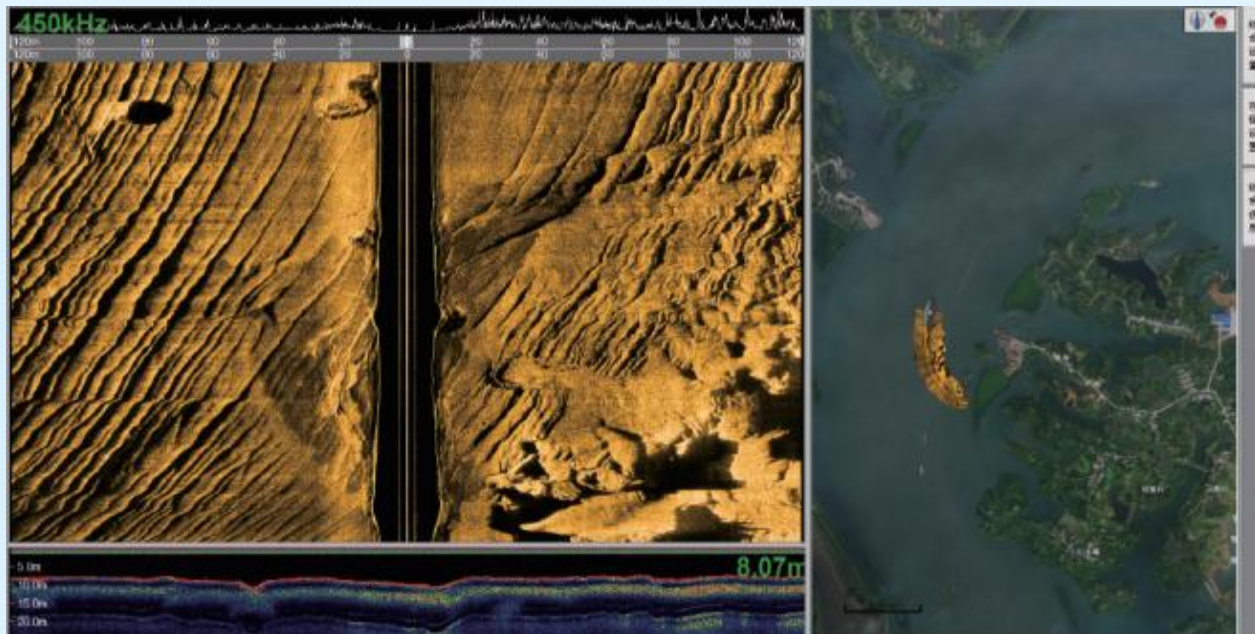
Address: Room 1703, Jin Yanlong Building, Xisanqi, Changping District, Beijing
telephone: 010-60789808 postbox: zhangkui@lcsonar.com

Shark-SU60 Multi-functional Deck Unit



www.lcsonar.com

Sonar indicators	Shark-SU60
Power supply type	220/110V AC, 12V DC
DC power supply	No need to distinguish the polarity, the positive and reverse connection can be normal power supply
Battery power status	10.5V LED flashing alarm, 10.0V turn off the battery input
Towing fish service voltage	It can be configured according to different models, and the voltage configuration range is from 20 V to 80 V
Built-in positioning accuracy	$H \leq 1.5m, V \leq 3m$ ($1\sigma, PDOP \leq 4$) (single-point) $H: \pm 8 mm, V: \pm 15 mm$ (RTK)
Built-in directional accuracy	$(0.15/R)^\circ$, R is the baseline length, measured in meters
Unit dimensions / weight	512mm*430mm*242mm/ 15kg
classification of waterproof	IP66
Power supply power consumption	220 / 110VAC or DC12V input, static 60W
Sonar software, OTech	Windows System supports NMEA 0183 data input; output data in OTSS and XTF
display device	1,000 lumens, high brightness, 17.3-inch large screen
Extended interface	USB 3.0 * 2 interface, RJ 45 interface, and RS232 interface



Address: Room 1703, Jin Yanlong Building, Xisanqi, Changping District, Beijing
 telephone: 010-60789808 postbox: zhangkui@lcsonar.com