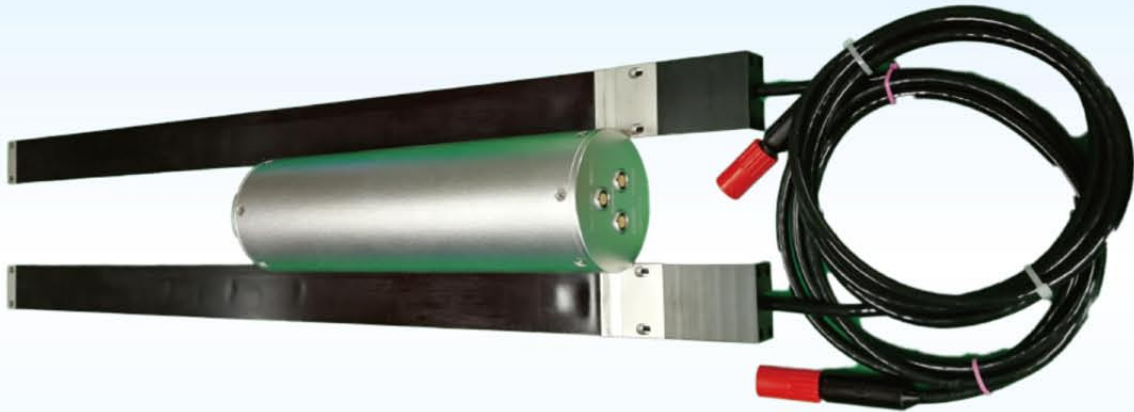




Shark-S150D Dual Frequency Side Scan Sonar (Separated Type)

www.lcsonar.com



Shark-S150D side scan sonar (separated type) is versatile multi-purpose sonar which can be applied to shallow and deep water. It contains dual simultaneous frequency operation of 150/450 kHz and advanced CHIRP signal processing technology, which provide extraordinary long range, high-resolution images.

Two strong pressure transducer arrays, underwater sealed electronic chamber, communication power cable and the OTech software are included in the sonar system of Shark-S150D side scan sonar (separated type). The system was designed with ultra-low power consumption and can be powered with 18V -36V DC power.

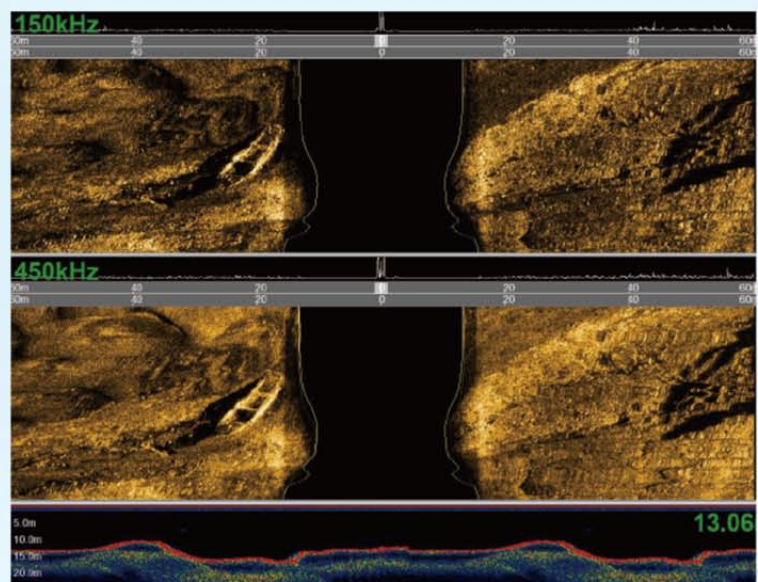
Otech software is equipped with the function of sonar image display, navigation, data recording & replay, target management & output and sensor information multi-window display. It can output the data with standard XTF format which can be processed with the third party processing software, and also can be customized according to the requirements.

FEATURES

- Dual Frequency, Simultaneous Operation
- Long range coverage and high resolution images
- CHIRP and CW Sonar Transmission Modes
- Depth Rated to 2000 m
- OTech acquisition software, free update

APPLICATIONS

- Military application, anti mine search and target scanning
- Maritime channel management, survey of sunken and submerged containers
- Classification analysis of marine geological and geophysical investigation
- Archaeological survey, underwater ancient city and Shipwreck search
- Investigation on laying and maintenance routes of cables and pipes
- Bottom topography survey of wind power and other new energy fields
- ROV / AUV / UUV and other unmanned underwater platforms



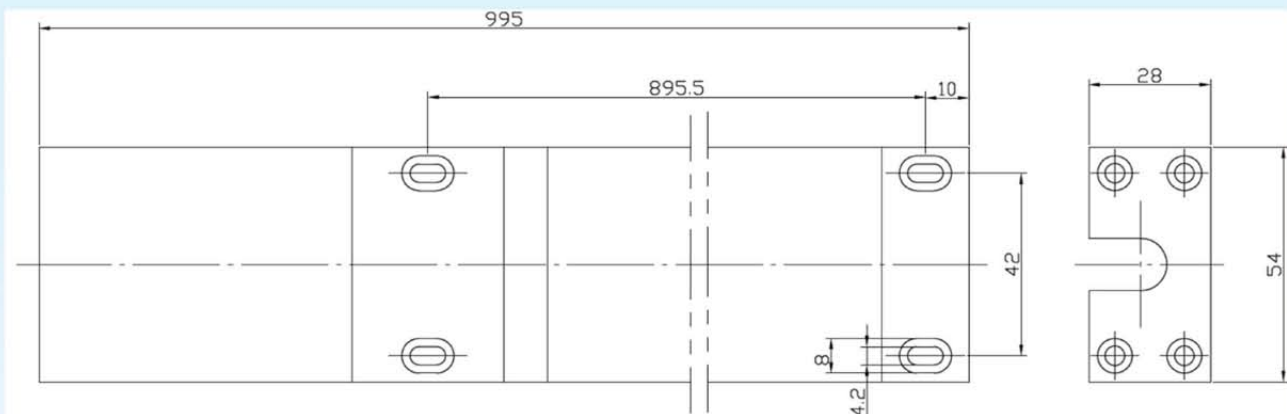
Beijing Address: Room 1703, Jinyanlong Building, Xisanqi, Changping District, Beijing, China
Tel.: +86-10-60789808 Email: oceansuv@163.com
Shanghai Address: 9D, 438 Pudian Road, Pudong New District, Shanghai, China
Tel.: +86-21-50811396 Email: info@rokem.com



Shark-S150D Dual Frequency Side Scan Sonar (Separated Type)

www.lcsonar.com

Sonar Specifications	Shark-S150D Separated Type
Frequency	150kHz / 450kHz, Dual frequency synchronous operation
Pulse Type	LFM / CW
Maximum Range	450m @150kHz; 150m @450kHz
Beam Width	Horizontal: 0.6° @150kHz, 0.2° @450kHz; Vertical: 50°
Resolution	Along track: 0.01h @150kHz, 0.003h @450kHz; Across track: 1.25cm
Transducer Installation Angle	Tilt down 15 to 20 degrees horizontally
Maximum Working Depth	2000m
Transducer Size/Weight (in the air)	995mm*54mm*28mm(L*W*H) /6.2kg
Unsealed electronic bin Size/Weight	360mm*105mm (L*D) /3.7kg
Sealed electronic bin Size/Weight	374mm*105mm (L*D) /4.5kg
Power Consumption	18~36VDC input, ≤40W
OTech sonar software	Windows, NMEA 0183 Navigation Data Input; OTSS, XTF Output Data Format
Tow Cable	Standard length: 2M (optional)



Beijing Address: Room 1703, Jinyanlong Building, Xisanqi, Changping District, Beijing, China
 Tel.: +86-10-60789808 Email: oceansuv@163.com
 Shanghai Address: 9D, 438 Pudian Road, Pudong New District, Shanghai, China
 Tel.: +86-21-50811396 Email: info@rokem.com