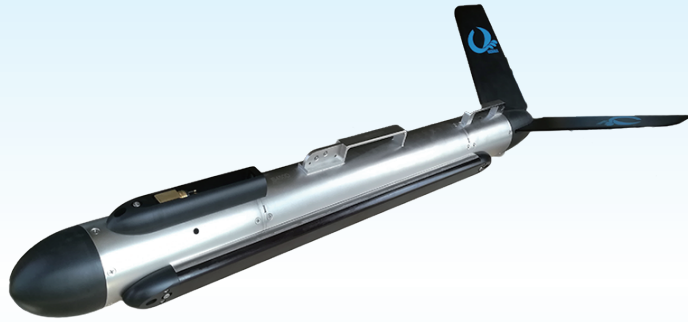




Shark-S150D Side Scan Sonar

www.lcsonar.com



Easy to Use
High Quality Image
Long Range Coverage
Low Power Consumption

Shark-S150D side scan sonar is versatile multi-purpose sonar which can be applied to shallow and deep water. It contains dual simultaneous frequency operation of 150/450 kHz and advanced CHIRP signal processing technology, which provide extraordinary long range, high resolution images.

A strong stainless steel towfish, a high strength Kevlar cable, a splashproof deck unit and the OTech software are included in the sonar system. The system is designed with ultra-low power consumption and can be powered with AC or DC power. The sonar is reliable and durable, and can be easily operated by one person.

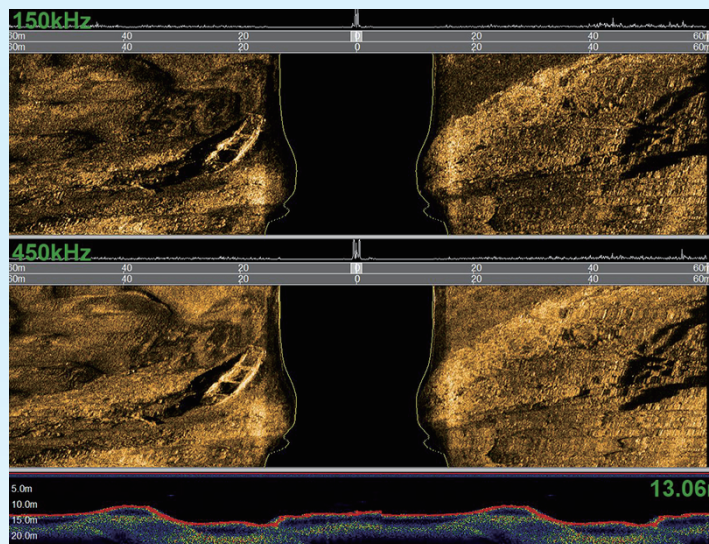
OTech software is equipped with the function of sonar image display, navigation, data recording and replay, target management and output and sensor information multi-window display. It can output the data with standard XTF format which can be processed with the third party processing software, and also can be customized according to the different requirements.

Features

- Dual Frequency, Simultaneous Operation
- Long Range Coverage and High Resolution Images
- CHIRP and CW Sonar Transmission Modes
- Standard Heading, Pitch, Roll and Pressure Sensors
- Build-in Echosounder, Accurately Tracks Towfish Height
- 316 Stainless Steel Towfish, Depth Rated to 1000m
- OTech Acquisition Software, Free Update

Applications

- Hydrographic Surveys
- Geophysical Surveys
- Cable and Pipeline Surveys
- Wide Area Search and Recovery
- Pier/Harbor Wall Inspections
- Archaeological Surveys
- Wreck Hunting



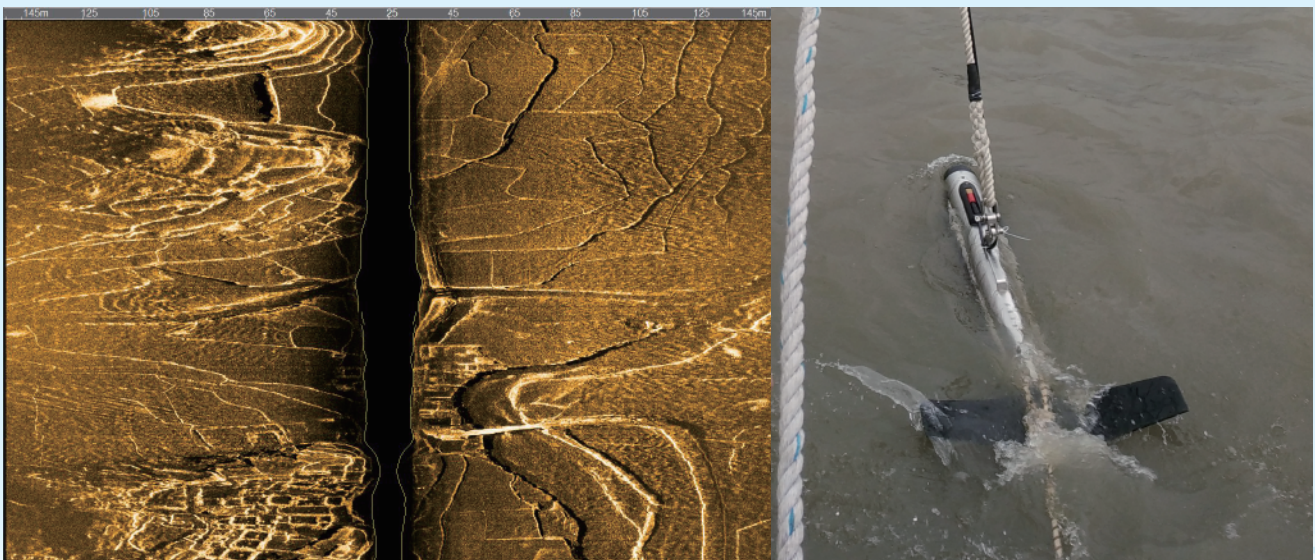
Add: Room 1703, Jin Yanlong Building, Xisanqi Street, Changping District, Beijing 100096, China
Tel: +86-10-60789808 Email: oceansuv@163.com [Http://www.lcsonar.com](http://www.lcsonar.com)



Shark-S150D Side Scan Sonar

www.lcsonar.com

Sonar Specifications	Shark-S150D
Frequency	150kHz & 450kHz , Dual Simultaneous
Pulse Type	CW & LFM CHIRP
Maximum Range	450m @ 150kHz ; 150m @ 450kHz
Beam Width	Horizontal : 0.6°@ 150kHz ; 0.2° @ 450kHz ; Vertical : 45°
Resolution (h-range)	Along Track : 0.01h @150kHz, 0.003h @450kHz ; Across Track : 1.25cm
Depression Angle	Tilted Down 10° , 15° , 20° , Default 15°
Maximum Depth Rating	1000m (316 Stainless Steel)
Standard Towfish Sensors	Roll, Pitch, Heading, Depth, Altitude
Towfish Size/Weight (air)	1264mm*105mm (Length*Diameter) / 29kg
Deck Unit Size /Weight	170mm*120mm*70mm / 0.8kg
Power Consumption	110/220VAC , 40W
Software OTech	Windows , NMEA 0183 Navigation Data Input ; OTSS, XTF Output Data Format
Tow Cable	Kevlar , Standard Length: 50m (Optional) ; Winches Available



Add: Room 1703, Jin Yanlong Building, Xisanqi Street, Changping District, Beijing 100096, China
 Tel: +86-10-60789808 Email: oceansuv@163.com [Http://www.lcsonar.com](http://www.lcsonar.com)