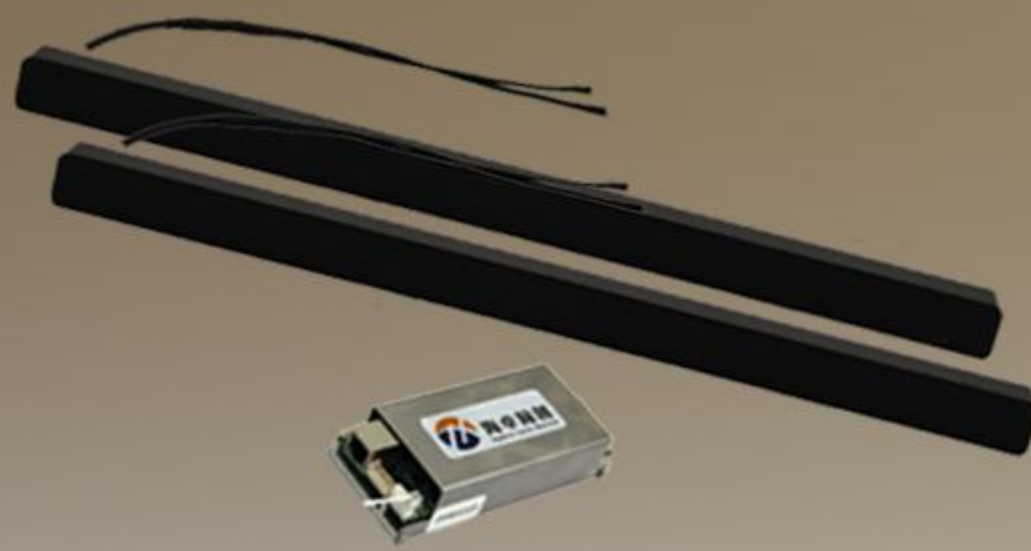


Hydro-Tech ES Series

Embedded Side Scan Sonar



Fulfill Various Platform Integration
Application



Embedded platform

Hydro-Tech ES series of side scan sonar has the features of small size, light weight, low power consumption. Its structure is simple, operation is easy, which is suitable for integration application. With different frequency, diversified shape and connector, ES series can meet the requirements of various small USV, ROV and AUV to do second development.



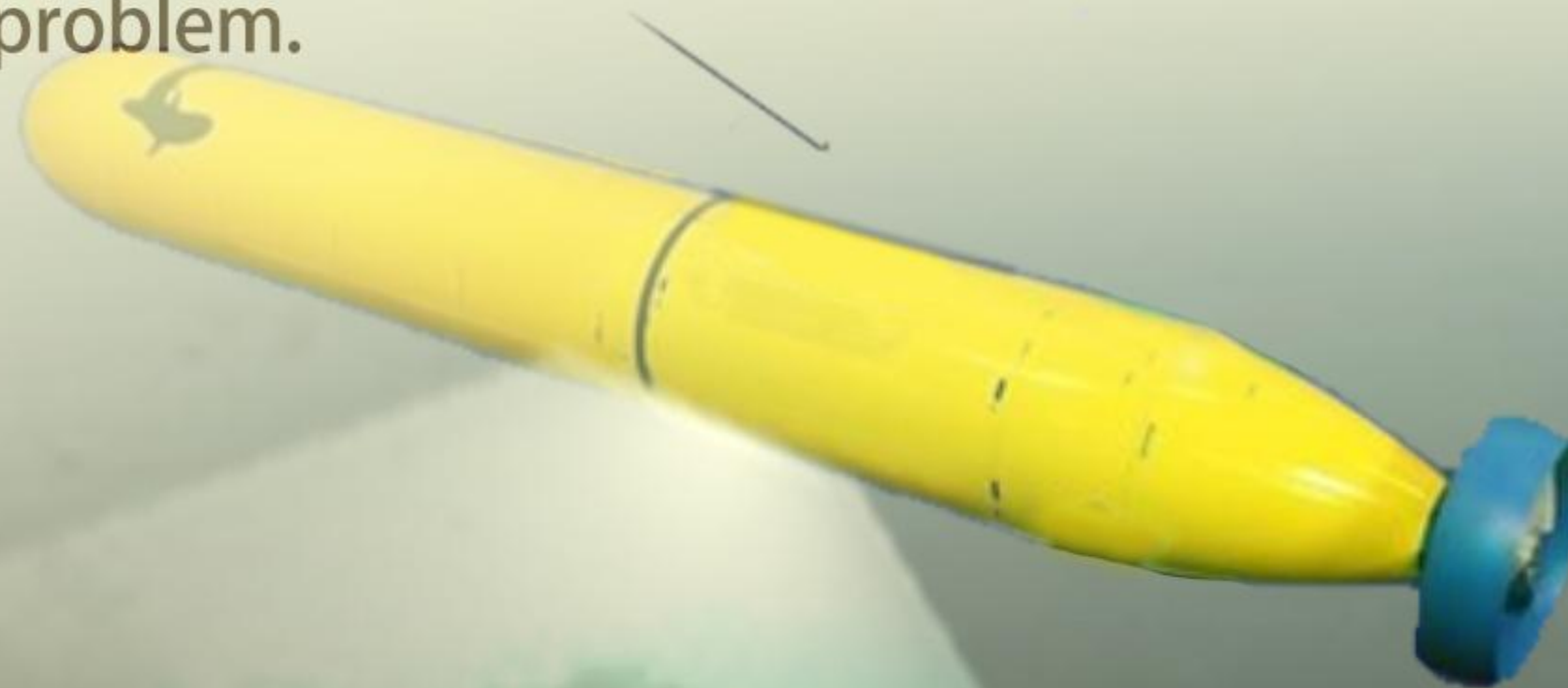
Compatibility

ES Series is compatible with various devices via Ethernet cable & RS232 Com port. Realize multi-module combination and collect all types of data of different sensors. It provides 8 output of sync signal by programmable TTL, which efficiently resolve complex sound interfering and synchronization control problem.



High Resolution Image

Innovative transducer design and advanced self-adaptive waveform adjustment technology combining broadband signal processing & image equalization technology, ES series side scan sonar can provide a larger scanning range and high-definition results.



Beijing Hydro-Tech Matine Technology Co.,Ltd

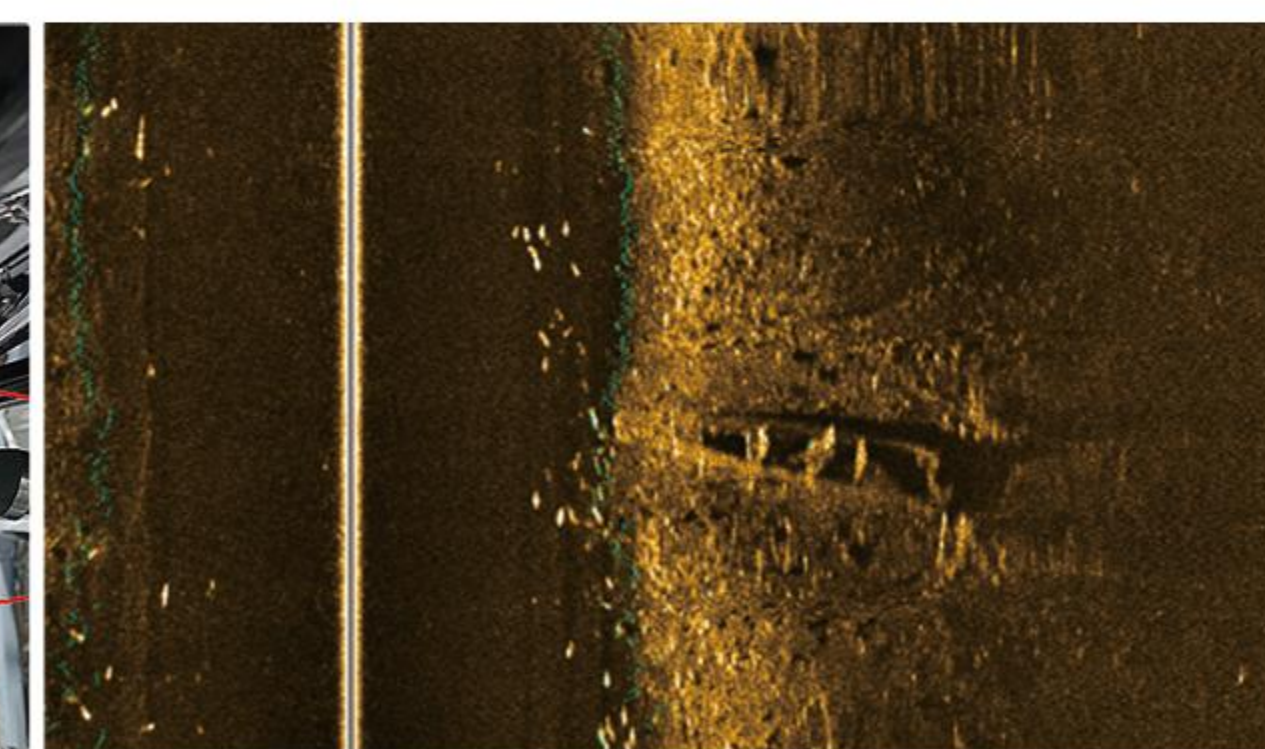
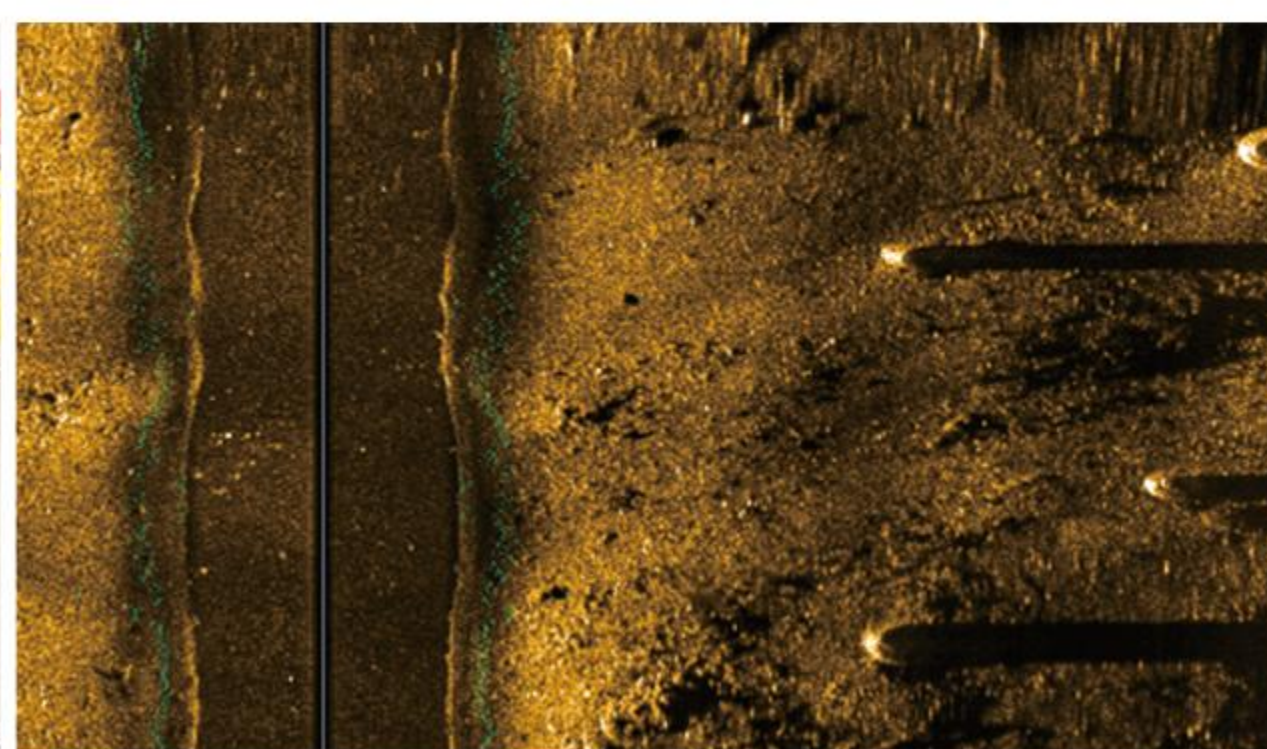


◀ Learn More

Hydro-Tech ES Series Embedded Side Scan Sonar



ES Series embedded side scan sonar is multi-frequency optional specially \ designed for AUV, USV, ROV and other unmanned platforms. The selectable working frequency range is from 450 to 900kHz. It is available for standard version and customized product, from single-frequency to dual-frequency, different size and shape. ES series side scan sonar adopts self-adaptive wave adjustment technology combining broadband signal processing and image equalization technology. They can clearly scan the image of small objects and complex underwater infrastructure. This is very helpful for underwater safety and small target detection applications.



Application



Emergency Rescue



USV application



Structure Inspection



Environmental Investigation



Technical Specification

Signal Form:	CW/Chirp(Optional)
Working Depth:	1000m(standard)/3000m(Optional)
Electronic systemsize:	12.7cmx58cmx2.7cm(LxWxH)
Electronic system weight:	~315g
Power Supply:	DC10-36V
Power Consumption :	10W-15W
Data Interface:	1 Ethernetdual controland data interface 1 isolated RS232auxiliarysensorinterface 1TTL syncinputinterface 8 TTL sync outputinterface
Software:	HydroSonarand SDK development kit
Optional:	Micro data logger, high-power storage capacitor

Comparison List

	ES900M	ES900	ES4590
Working Fre quency	900kHz	900kHz	900kHz
Horizontal Beam Width	0.4°	0.2°	0.2°
Vertical Beam Width	40°	50°	50°
Max Slope Range	75m	75m	150m@450kHz 75m@900kHz
Along Track Resolution	0.14m@20m 0.35m@50m	0.07m@20m 0.07m@20m 0.26m@75m	450kHz 0.17m@50m 0.34m@100m 0.51m@150m 900kHz 0.07m@20m 0.17m@50m 0.26m@75m
Cross Track Resolution	1cm	1cm	2cm@450kHz
Transducer Size	29.2×2.5×2cm	43×2.5×2cm	85×2.5×2cm
Transducer Weight	185g×2	310g×2	1.25g×2

All spec. above is subject to change without notice.